

DATASHEET

RS-HYH49M4E-2
UHF RFID Dry Inlay

KEY DATA

Chip: Monza M4E
Antenna Size: 44 × 44 mm
Format: Dry Inlay, Wet Inlay,
White Paper

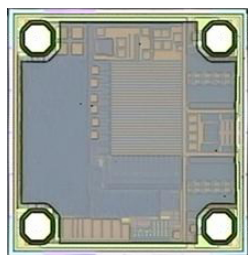


RS-HYH49M4E-2

APPLICATION

Supply Chain & Logistics Management
Warehouse Management

OVERVIEW



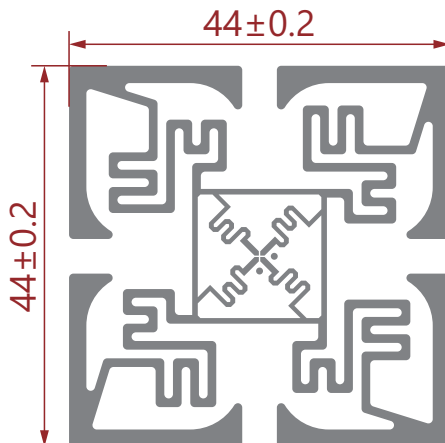
RS-HYH49M4E-2 UHF RFID Dry Inlay is built with Impinj Monza 4E.

Monza 4E tag chips offer up to 496 bits of EPC memory, 128 bits of User memory, and a serialized TID to provide fast access to a larger memory, as well as meet the needs of applications requiring greater than 96 bit EPC numbers. Monza 4E also provides True3D antenna support.

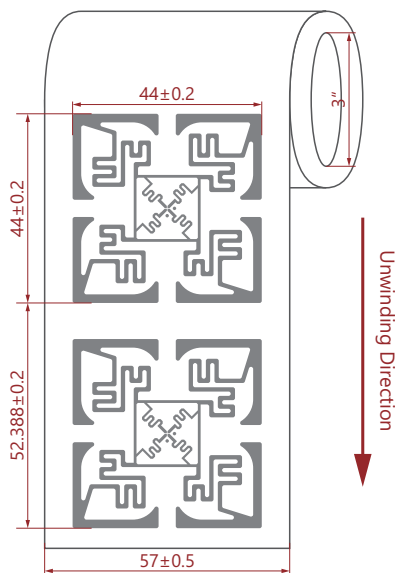
DATASHEET

RS-HYH49M4E-2
UHF RFID Dry Inlay

DIMENSIONS

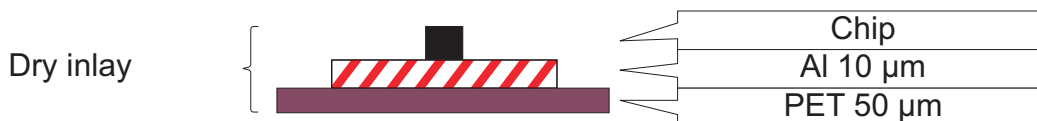


ORIENTATION



Physical characteristics	Dimensions
Antenna size	44 × 44 mm
Inlay pitch	52.388 mm
PET width	57 mm
Material thickness	Al 10 μm + PET 50 μm
Reel detail	Web width: 57 ± 1.0 mm Inner core diameter: 3" (76.2 mm) Core thickness: 5 ± 2 mm

STRUCTURE



ELECTRICAL CHARACTERISTICS

Item		Description
Manufacture/IC		Impinj Monza 4E
Base Material		PET
Antenna		Etched Al (10 μm) + PET (50 μm)
Protocol		RAIN RFID / ISO 18000-6C and EPC global Gen2v2 Compliant
Memory	User	128 bits
	TID	48 bits
	EPC	496 bits
	Password	Kill Password - 32 bits Access Password - 32 bits
Frequency		860 ~ 960 MHz
Operating Mode		Passive
IC Life		100,000 Programming cycles, 50years data retention
ESD Voltage Immunity		Max. 2000 V

ENVIRONMENTAL REQUIREMENT

- Operating Temperature/Humidity: -5°C ~ 60°C / 20% ~ 80% RH
- Storage Temperature/Humidity: 20°C ~ 30°C / 20% ~ 60% RH
- Shelf Life: From the date of manufacture, 1 year in anti-static bag at 20°C ~ 30°C / 20% ~ 60% RH, and avoid direct sunlight exposure

PACKAGING

Reference Packing: Static-free bag with zipper; 6000 ± 100 Pcs/roll, 4 rolls/ctn (Actual Qty as per Shipping Mark).

